



Marshmallow Moon

Surface Design • Illustration



I've gone from hustling street artist to commercial success, starting with my line of hand-painted ceramics called Dirty Dishes. Impromptu parking lot craft fairs paved the way to dedicated displays in Macy's Herald Square and other retailers across the U.S. Dirty Dishes' notoriety led to licensing my most popular lines, becoming a brand-gone-viral with Scared Guy, and then writing and illustrating a stack of children's books published by Simon & Shuster, Harcourt, HarperCollins, and others. Recently, I have segued into creating surface pattern designs for licensing using the same style, humor, and joyful touch that made my previous projects so successful. Boy, am I grateful for having had a long and productive journey making art for a living! I welcome you to check out my latest patterns.

Kudos

Dear Katie, I've got good news and good news! First, the good news: your designs are going better than great. The whimsy and uniqueness of your line is being gobbled up by all of our customers. Now, for the other good news. Spiegel catalog loved your jewelry and is devoting a full page in their Christmas catalog (the big one) to your jewelry... The chief buyer bought four pieces of your jewelry for her own use. **Artwear Concepts**

I am writing you this letter to inform you how successful your merchandise was for us this past fall....The sell-through was very encouraging....Also, the goods sold not only in our flagship Herald Square store, but also in many of our smaller branch stores. We look forward to continued successful business relationship with you in the near future. **Macy's New York**

I am pleased to add my voice to the chorus of retailers and consumers, who have been excited by your designs and craft of Katie [Freedman] Davis's Dirty Dishes. Art Related Things is a two location retail store operating in the Sacramento metropolitan area. Our clientele is upscale, sophisticated, and traveled. Since the day we opened our doors, Dirty Dishes has been a featured and successful ceramic line. **Art Related Things**

Dear Katie, your shirts are doing super in the Aspen store; hopefully, they will do as well here in Lahaina. **Art Tee Gallery**

Featured In



The background of the entire page is a light green color with vertical stripes of a slightly darker shade of green. The stripes are evenly spaced and run from the top to the bottom of the page.

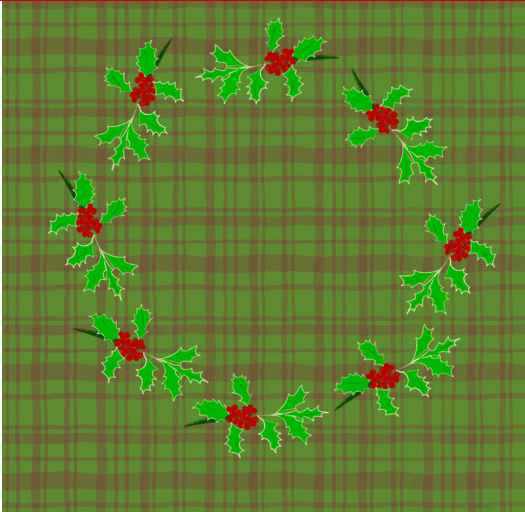
Holiday Collections



<— Green on Green Stripe KD24-B21

Santa's Bag KD24-A92

Merry Merry



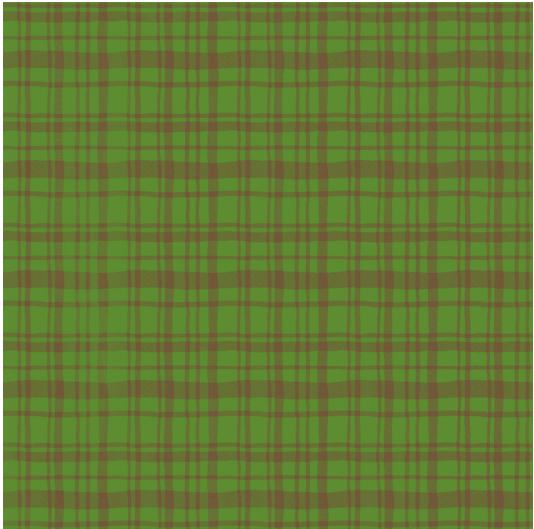
Merry Plaid Green Wreath KD24-A42



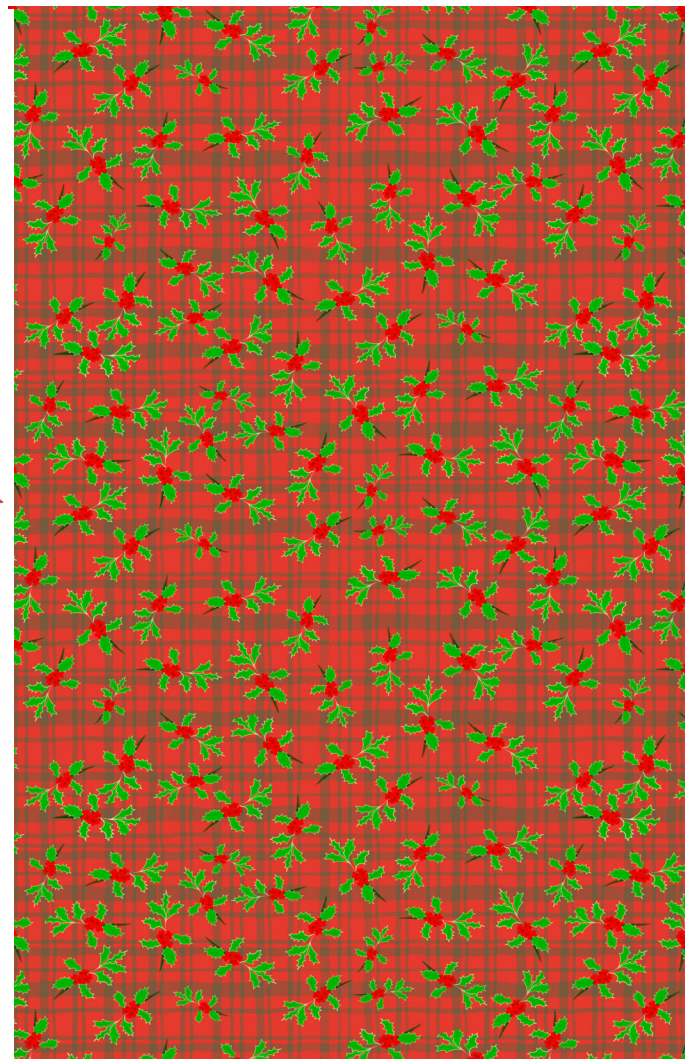
Santa's Bag Wrapping Paper Mockup



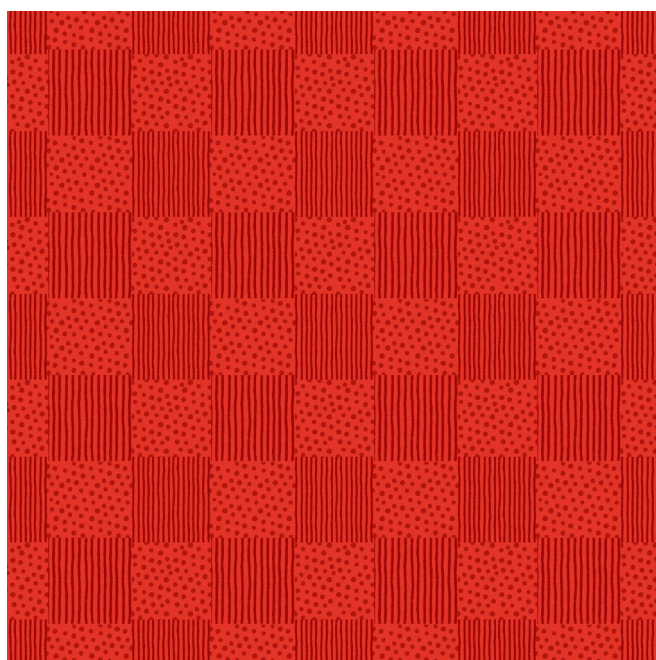
Rudolph Red Stripe KD24-B13



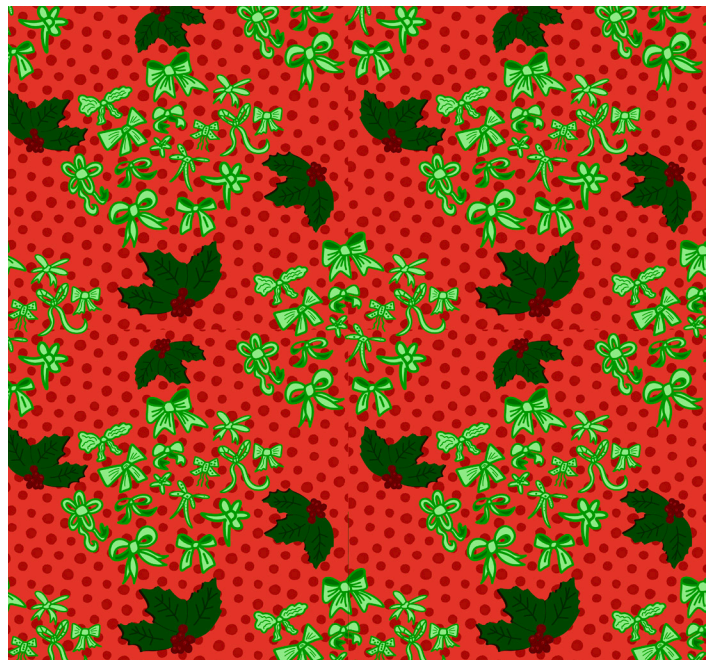
Merry Plaid Green KD24 A37



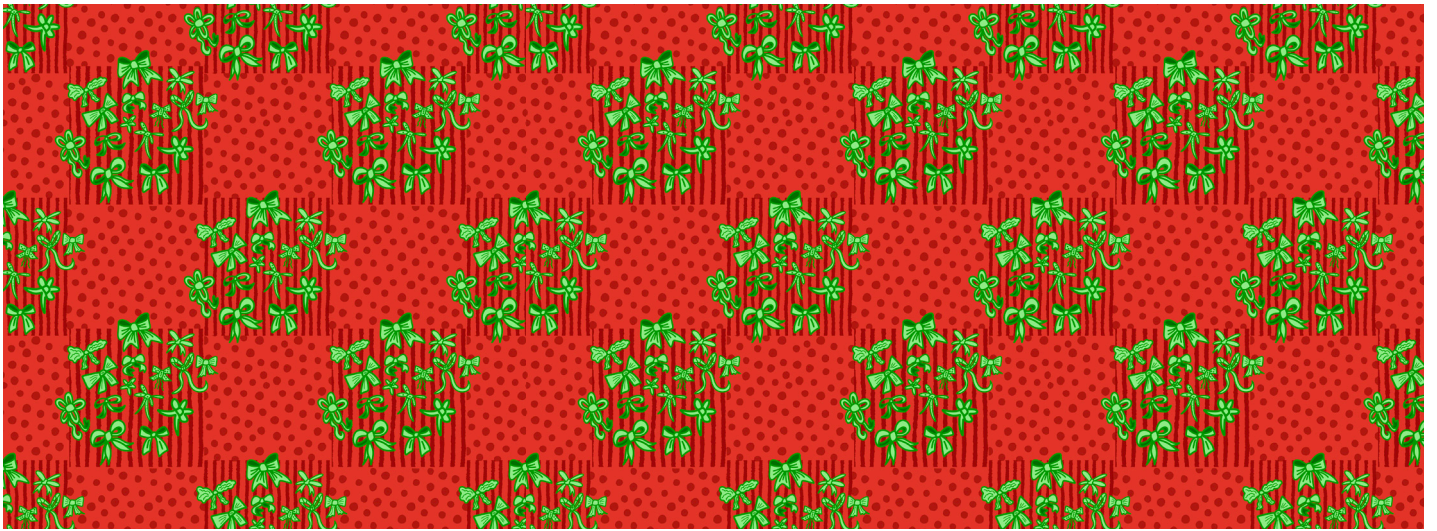
Merry Plaid Red Poinsettia KD24-A43



Red Dots Stripe Checker KD24-A77



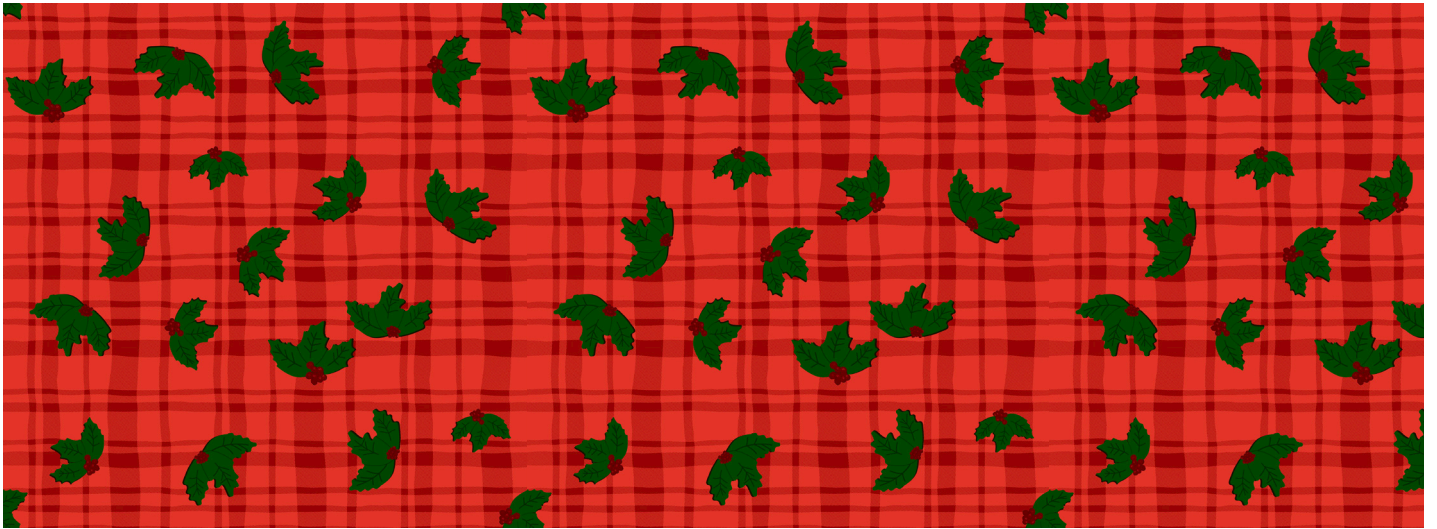
Holly Ribbon Dots KD24-A75



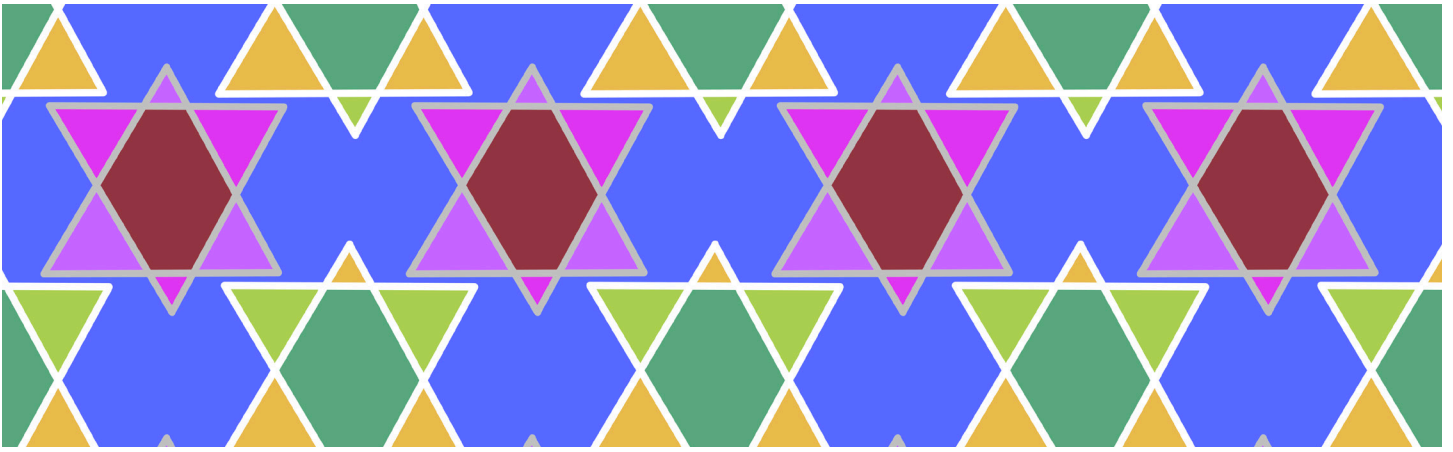
Red Dots Stripe Bows KD24-A83



Merry Red Plaid KD24-A38



Holly Red Plaid KD24-A76



Single File Purple KD24-A56

Star Bright



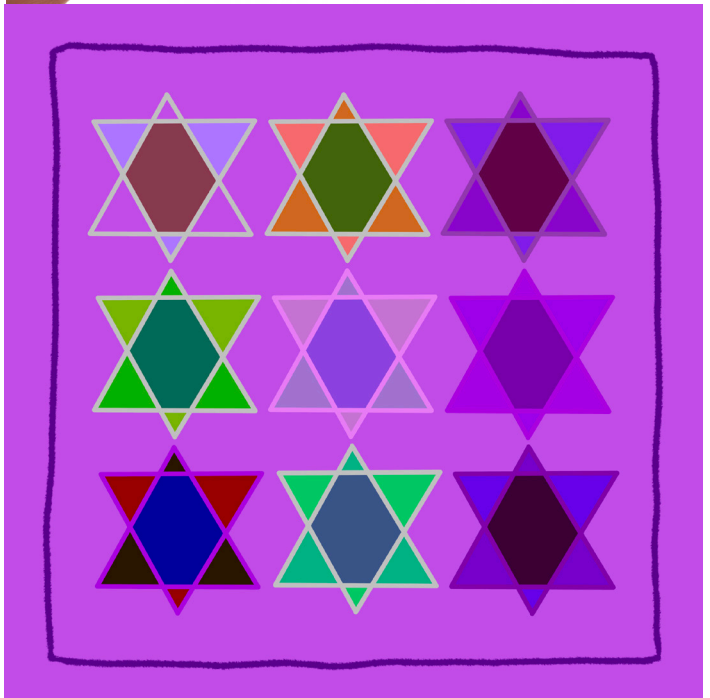
Hanging Stars KD24-A58



Blue Block Dreidel KD24-A47



Menorah Happy Hanukkah KD24-B15



Star Quilt Pink KD24-A69

The background of the entire page is a repeating pattern of watercolor-style green vines and leaves. The vines are dark green and curve and spiral across the white space. Attached to these vines are various green leaves and buds, some fully formed and others as small, pointed shapes. The colors range from a vibrant lime green to a slightly darker forest green, with soft, painterly edges.

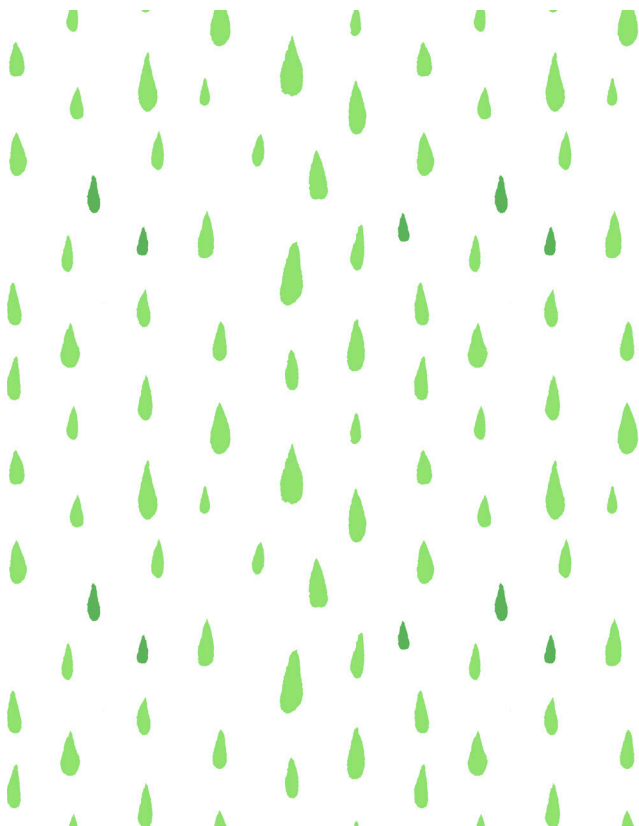
Floral Collections



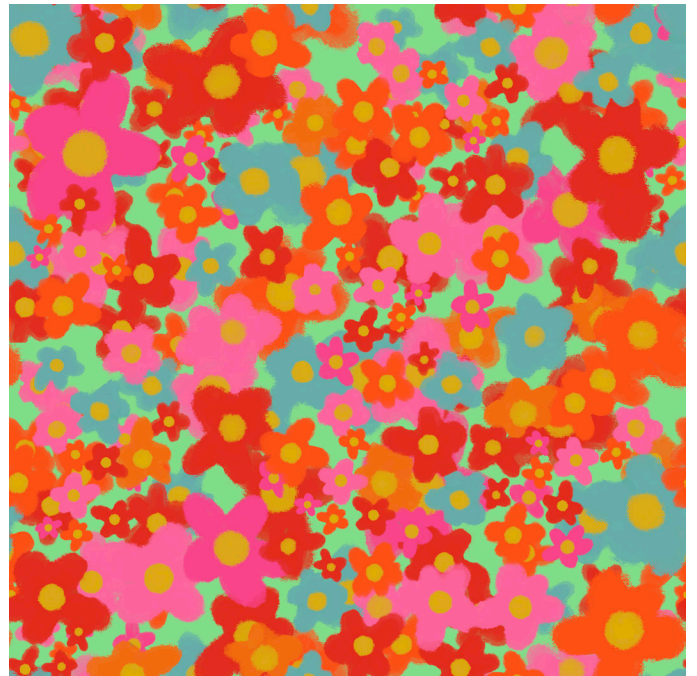
Petal Cascade

<—Jade Journey White KD24-A29

Blossom Brook KD24-A32 (Plate, above.)



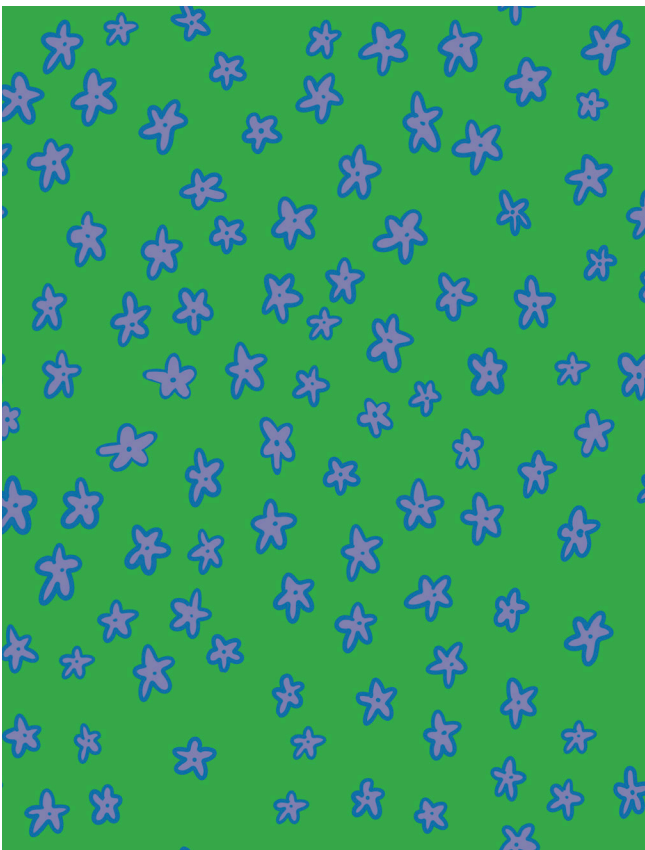
Dahlia Dew KD24-B7



Peony Pour Green KD24-A30



Blossom Brook KD24-A32



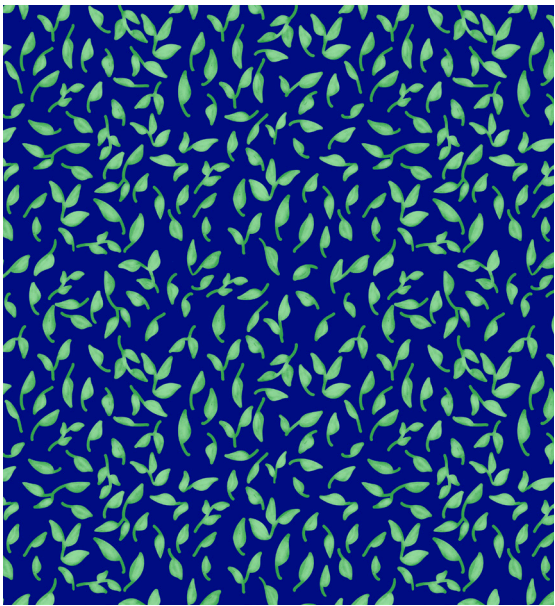
Orchid Overflow KD25-B20



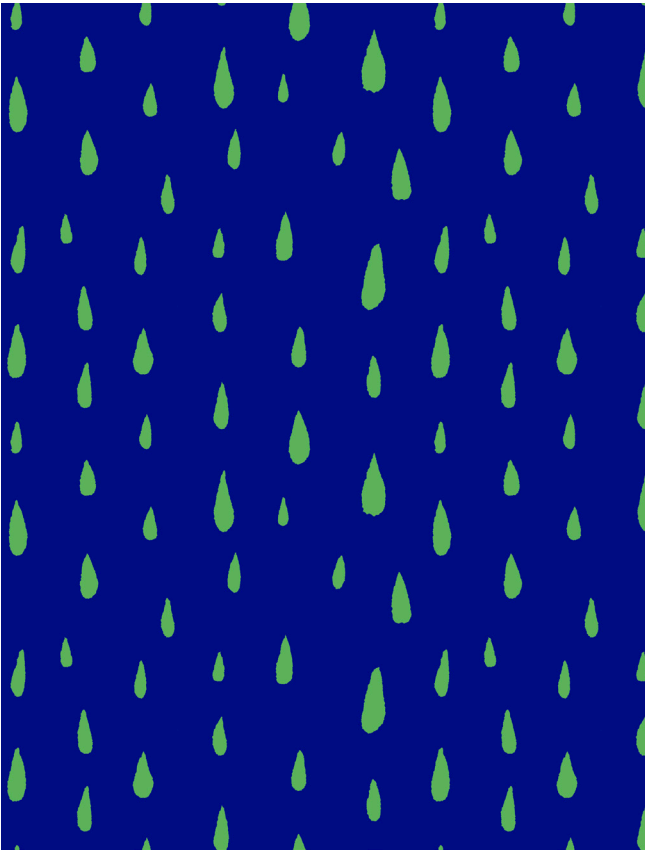


Verdant Vine KD24-A28

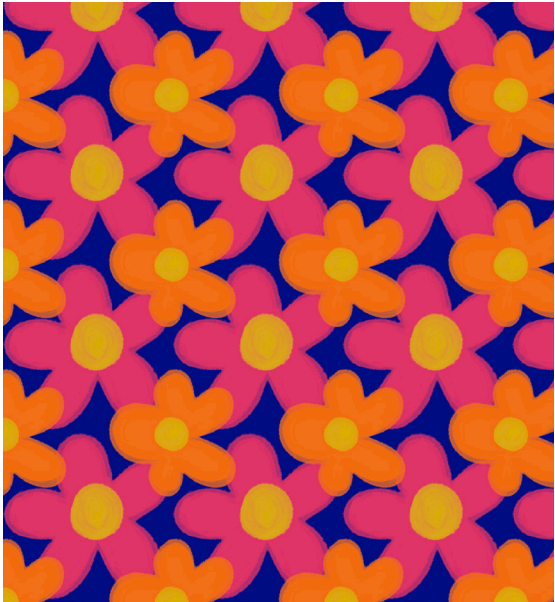
Forest Flow



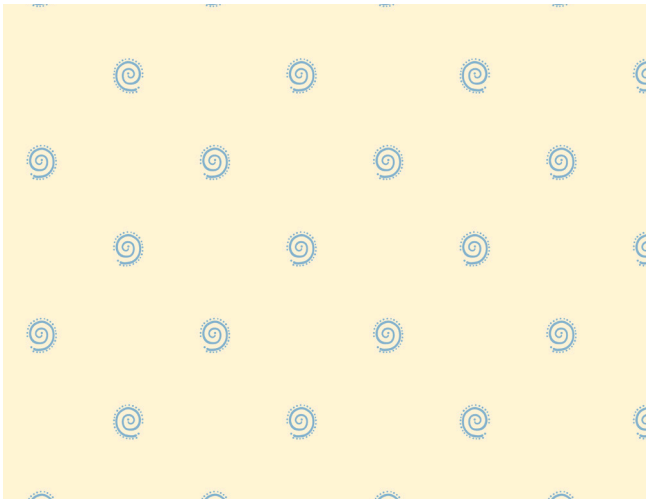
Lush Leaf Blue KD24-B19



Dahlia Dew Blue KD24-A35



Poppy Plunge Blue KD24-A31



Spiraling Cream KD24-A13



Lily Fall KD24-B14

Wedding Weekend

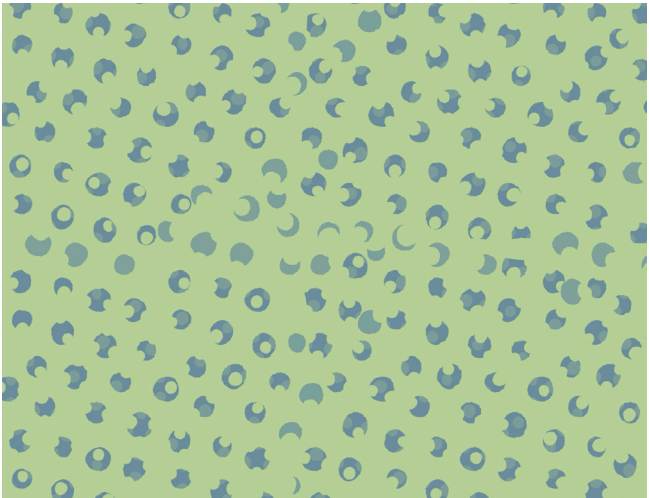




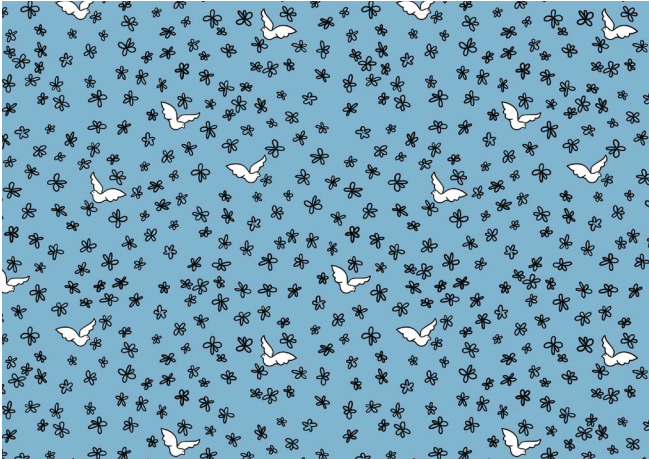
Ruby Cream KD24-A18



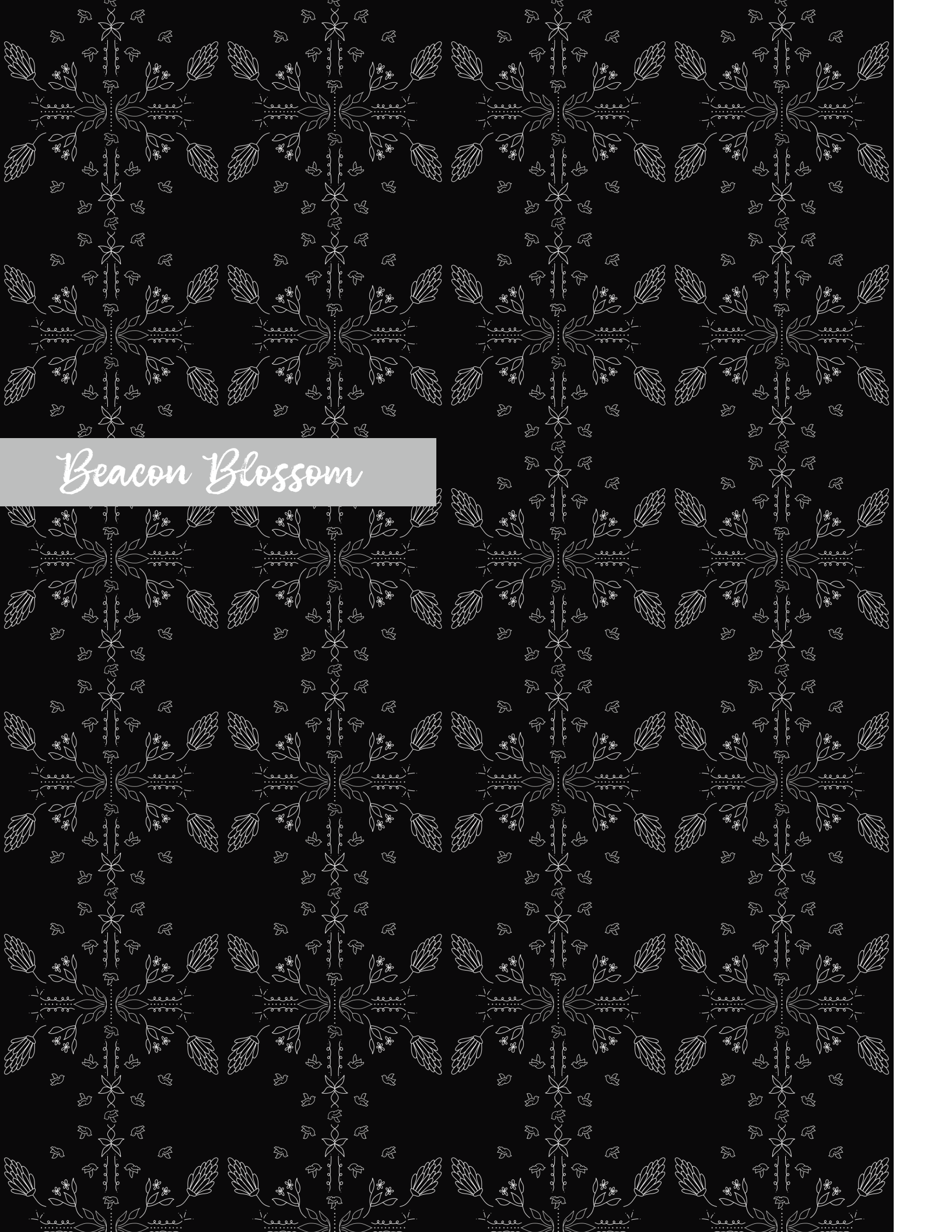
Waiting Wildly KD24-A26



Bird Prints KD24-A27



Flocking Blue KD24-A90



Beacon Blossom



<—Lantern Bouquet KD24-B17

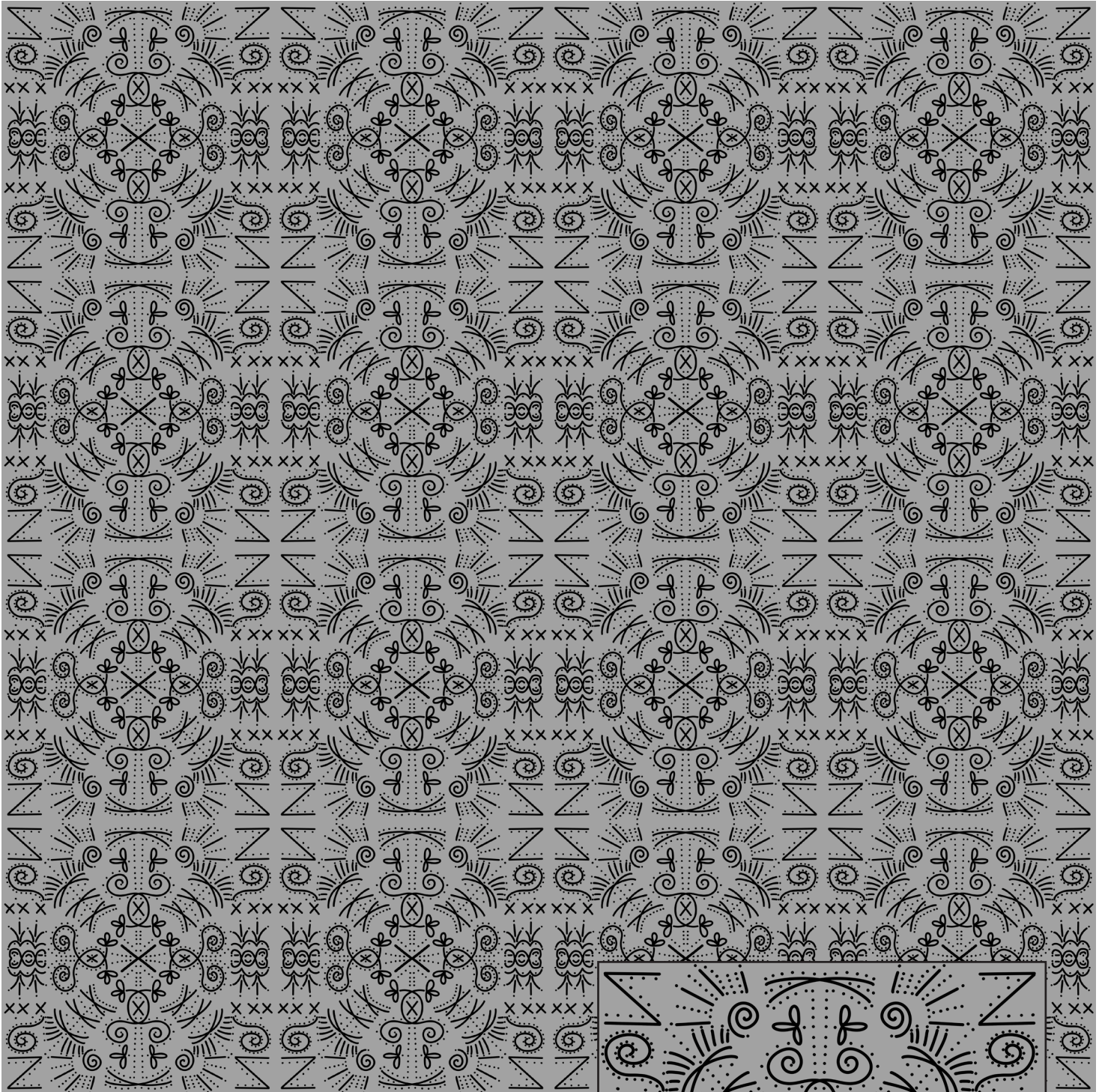
Lantern Black KD24-A16 (above)



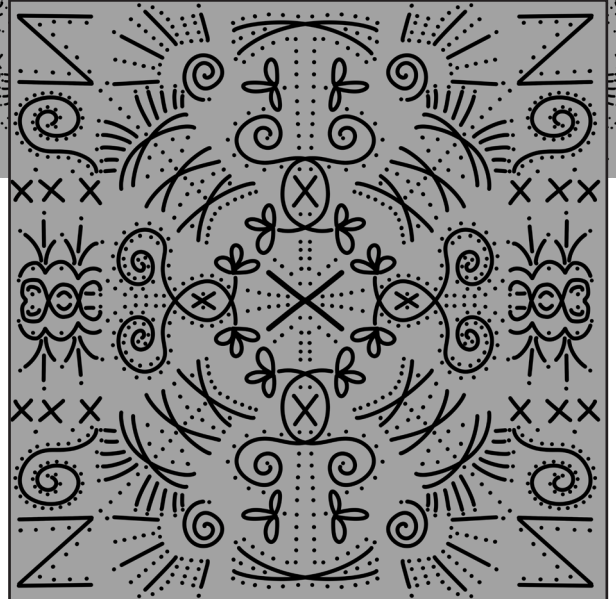
Shadow Petals White KD24-B4



Lantern Birds KD24-B5

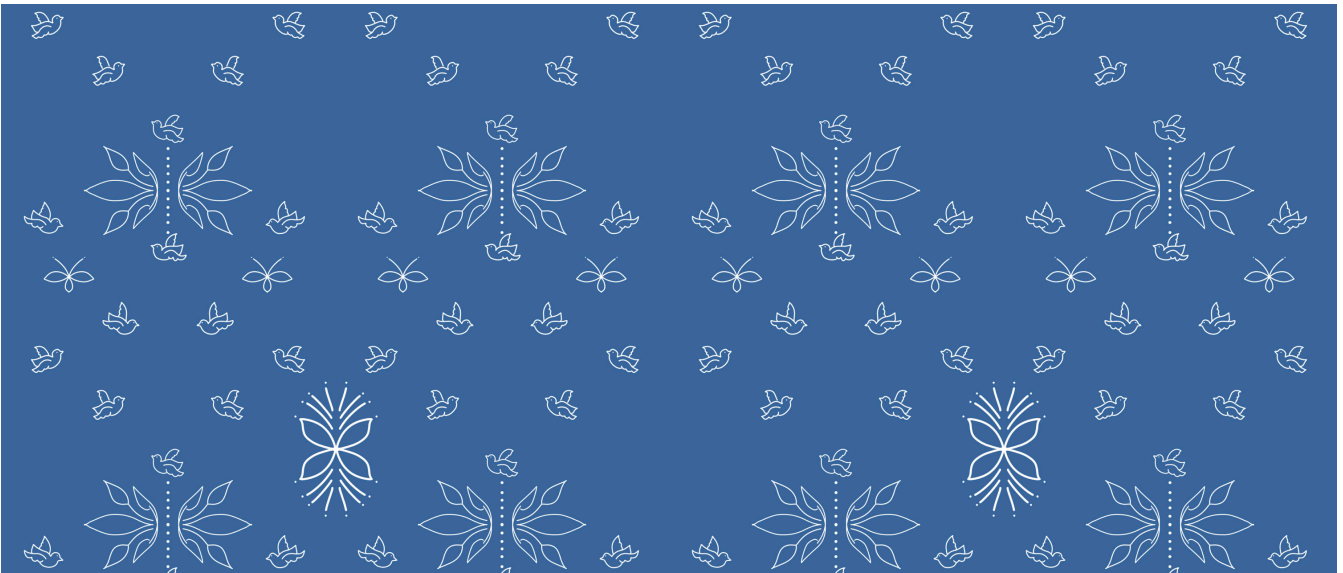


Lantern Mirror KD24-B6





Greyscale Elegance KD24-B16



Greyscale Elegance Blue KD24-B18



Lantern Bouquet Grey KD24-B17